



The Star

January 12, 2020– January 18, 2020



Sunday Prayers:

Heidi Carlson, David Pedersen, Larrie Nettum, Kathryn Cederstrom, Eileen Nix, Linda Goldberg, John Guddie, Bethany Rabenold, Rick Bethem, Pat Doverspike, Fran Bergman and Victoria Warrenfelz.

Discover Emmanuel

Education classes



THIS SUNDAY
8:15 - 8:45 am and
10:15 - 10 :45 am in the
Media Center

**There will be a Bible Study on
Thursday, January 16 at 9:30 am
in the media center**

Readings for Sunday, January 19, 2020



Isaiah 49:1-7
Psalm 40:1-11
1 Corinthians 1:1-9
Matthew 3:1-17
Color: **GREEN**



OPPORTUNITY TO GIVE FLOWERS

If you would like to give flowers for our weekly worship services in honor, memory, or appreciation of someone, please call the office (239-261-0894). **Taking requests for 2020**

Join our Weekly Activities:

Mondays 9:30 a.m. - 1:30 p.m.
Quilting - Community Room
Call Jane Hauck at 605-366-4338

Wednesdays 1:00 - 3:00 p.m.
Paper Beading - Upstairs
Call Carol Duncan at 239-777-3213

1st & 3rd Wednesdays 1:00 - 2:00 p.m.
Grief Group - Chapel
Call Carol Hartman at 239-261-0894

Fridays 1:00 - 3:00 p.m.
Mahjong - Upstairs
call Carol Duncan at 239-777-3213



Nursery available for 9:30, 10:00 and 11:00 a.m. services. Please see an usher if you need further information.

Women with Women Group

The Women with Women Group will have a planning meeting on January 15 at 11:00 am. All are welcome to help plan future events.

Congregational Annual Meeting:

Congregational Annual Meeting will be held on **Wednesday, January 22, 2020, at 5:30 p.m. in the Family Life Center.**

- At the meeting the Proposed 2020 Spending Plan will be shared, as well as a review of other reports from the many ministries of our congregation and synod.
- Included in this will be updates from Emmanuel Communities, Inc. and Emmanuel Academies (non-profits).

Light appetizers will be served beginning at 5:00 p.m.

The Annual Report will be ready for distribution on Sunday, January 19, so those who are interested can review it prior to the Annual Meeting.

Please join us for this important gathering in the life of our congregation.



Season Bonus Bible Study Thursdays

10:45 am - 11:45am

Pastor Rick Bliese - "Overview of the longest Gospel in the NT: The Gospel of Matthew." (*The month of January*)

Resident Pastor Karole Langset - "Women in the Bible: The Prophets" (*The month of February*)

Resident Pastor Lois Sorensen - "Communion with Creation: Exploring the biblical roots of the vocation of environmentalism, including the ecotheology of our creation stories and church sacraments." (*The month of March*)



See the January 2020 Newsletter for details or call Gina at 239-261-0894 to sign up. You can also sign up on the website. Click on the blue tab on the home page to fill out your form. **If you are interested in participating this year, please sign up**

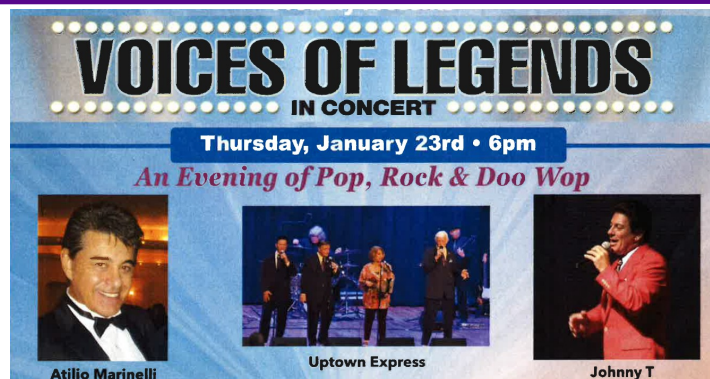
now. Groups will be put together this week.

SHINE Medicare Open Enrollment Event

When: January 29
Hours: 9:00 am - 4:00 pm
Where: Emmanuel Lutheran Church

SHINE counselors are available to help you look at your Medicare plans to make sure you have the best plan to meet your changing health and financial needs.

No appointment, walk-in only on event date. Bring your Medicare ID card and a list of medications with dosage. If you are unable to attend this event, please call the Helpline at 866-413-5337



Save the Date! March 16 from 12:00 p.m. - 7:00 p.m.

We are updating our **Membership Pictorial Directory**. If you missed being part of the last directory for any reason, you can schedule a time to have your photograph taken. Call the church office at 239-262-0894 to get more information or to sign up.

SERVING OTHERS MINISTRY TEAM



Come join Grace Place as they celebrate with an open house on Thursday, January 16 from 2:30 - 4:30 p.m.

Participate in Two Local “MLK” Remembrances!



Our very own Theresa Shaw is “Mistress of Ceremony” for this year’s prayer breakfast! It will be held on Friday, January 17, at 7:30 a.m. at the Naples Hilton Hotel (5111 Tamiami Trail North). Tick-

ets are available through www.trinitylifefoundation.org (\$40/individual, \$400/table), or contact Theresa through the office at Emmanuel for more information.

Emmanuel will once again have an information table at the post-parade celebration held at Cambier Park (8th Avenue South). This year’s parade is on Monday, January 20, starting at 11 a.m. Its theme is “Defeat Hate with Love: Dr. King’s Legacy of Inclusion and Diversity.” The post-parade celebration starts at 12 Noon and features entertainment, children’s activities, food, and other vendors. **Please wear your Emmanuel nametag or shirt.** To help staff the information table (11:30 - 1:30), please contact Resident Pastor Lois (lois@naplesemmanuel.org) or call Nancy Nodell at (239)676-8537 or Deacon Jim at 239-261-0894.

Emmanuel’s Nursing Home Ministry

The year 2020 marks the ninth year of Emmanuel’s Nursing Home Ministry. Each Monday morning, a team of three or four persons presents a thirty-minute worship service at two area nursing homes — Heritage Healthcare and Rehab Center and Manor Care at Lakewood. We usually have about 40 residents participating at the two locations.

We need your help to continue this ministry. We need persons to be leaders (deliver a short message), to be pianists (play three or four hymns), and to be assistants (greet residents and pass out lyrics).

If you are interested or have questions, please contact David and Edie Cole at (239) 455-5820 or dwc616@mac.com.

Children & Youth Ministry



Calling all children and youth... It’s time to begin another great season of learning together and growing in our Christian faith.

11:15 am – 12:00 pm.

Children (K-5) will meet in upstairs in Room 1 and Middle and High School students will meet upstairs in the Oasis Student Center.

Rock the Universe: January 25

To sign up for either event, contact Jim Cooper at jim@naplesemmanuel.org



We will be traveling by a motor coach to Orlando. Please be at the church on Saturday, January 25 at 10:00 AM. We should be arriving back at the church between 4:30 AM – 5:30 AM on Sunday morning. FOOD: Have breakfast before you arrive on Saturday. The bus will not stop for food on the way up or the way back. Please bring your own money for food, snacks and souvenirs while inside the park. PILLOWS AND BLANKETS: Feel free to bring a pillow and /or blanket for the bus ride. There will be adequate supervision and adult chaperones. SPACE IS LIMITED: Only 54 seats are available, so don't delay in getting your registration and money turned in.

Cost: \$68.00

Registration deadline is January 20 or when the bus is full.



12th Annual Family Retreat: February 21-23

Join us for a wonderful time of getting away and reenergizing your faith.

This wonderful weekend is open to the entire Emmanuel Family...families, couples, singles, seniors and single parents. *Everyone is invited.*

Registration : Cost is \$50 for a single person and \$110 for a family. This includes lodging, four meals and all program activities.

Register at www.NaplesEmmanuel.org or with Jim Cooper at Jim@naplesemmanuel.org

Lit and Latte Book Club

Everyone in the community is invited to join our group. Please feel free to bring houseguests and friends, as all are welcome. If you have any questions, please contact Bonnie Kischer at bkischer@yahoo.com. **We meet upstairs next to the elevator from 2:00-3:30 PM.**



January 13: The Rosie Project by Graeme Simsion
Presented by Debbie Lawson Romantic and comedic story about an undiagnosed Asperger syndrome man as he looks for a wife.

Our Mission:

A Christ-centered community where God’s Spirit guides our lives as we worship, learn, love, share and serve.

EMMANUEL LUTHERAN CHURCH (ELCA)
777 Mooring Line Drive, Naples, FL 34102

Sunday Services with Holy Communion 7:45, 9:30 & 11:00 am; Alive Service at 10:00 am; Bilingual Service at 11:15 am
239.261.0894 ☎ Fax: 239.261.1802 ☎ Web address: www.naplesemmanuel.org
Email: elc@naplesemmanuel.org



Rev. Steven E Wigdahl, Senior Pastor
Rev. José Lebrón, Associate Pastor for Mission Development
Rev. Dr. Rick Bliese, Associate Pastor
Rev. Will Kittinger, Associate Pastor for Mission Development
Karole Langset, Resident Pastor
Theresa Shaw, Executive Director
Ken Wistrom, Choir Director

Jim Cooper, ELCA Deacon, Youth & Family
Joyce Finlay, ELCA Deacon, Music & Worship
Carol Hartman, RN - Parish Nurse
Dee Schleutker, ELCA Deacon, Service & Outreach
Lois Sorensen, Resident Pastor
Vivian Shea, Chief Operations Officer
Jamie Searles, Alive Music Leader



Living in God’s amazing grace

If you need any information about Emmanuel Lutheran Church, please visit our website www.naplesemmanuel.org